

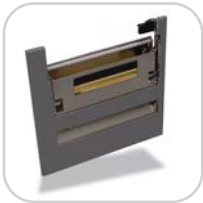


DCS & Labelling Worldwide

High performance on-site labelling system

M-84PRO

Optional accessories



Label Dispenser



Label Cutter



Rewinder

Heavy-duty Industrial Barcode Printer

The M-84PRO is the SATO printer designed for heavy usage and precision printing. It comes with interchangeable print heads that allow users to select printing at 203, 305 or 609dpi. Coupled with speed, this printer is a must-have for all high volume printing needs. What's more, the availability of the various accessories help make this printer a reliable all-rounder, all year round.



M-84PRO

General Specifications:



The True Industrial Printer

Print Method	Direct Thermal, Thermal Transfer
Print Resolution	Choice of 203/305/609dpi (8/12/24dppmm)
Max. Print Area	203 dpi: W104mm x L1249mm (W4.1" x L49.2")
	305 dpi: W104mm x L835mm (W4.1" x L32.8")
	609 dpi: W104mm x L356mm (W4.1" x L14")
Print Speed	203 dpi: 2, 4, 6, 8, 10 ips
	305 dpi: 2, 4, 6, 8 ips
	609 dpi: 2, 3, 4, 5, 6 ips
Media Type	Die-cut labels, Fanfold, Tag Stock or Continuous
Media Size	Width 22mm ~ 125mm (0.87"~5.1")
Ribbon	Length 6mm ~ 356mm (0.24" ~ 14.0")
Sensor Type	Width 38mm ~ 111mm (1.5" ~ 4.4"), Length 450m (Up to 1475ff), Thickness 4.5 micron, Wound Face-In
Processor	Adjustable photo-sensor position for die-cut labels & tags, Fixed reflective sensor for use with preprinted I-marks, Continuous forms with "Sensor Not Used" mode
	32 Bit RISC/133 MHz,
Interface Choices	Receive Buffer: 2.95MB Flash ROM: 2MB (4MB optional) (buffer near full at 2MB)
	Parallel: IEEE 1284 (ECP), Serial: RS-232C (9600 - 57600 Bps) RS-422/485 (9600 - 57600 Bps)
	LAN (10/100 BaseT) USB Version 1.1
Barcode Symbologies	Elementary: UPC-A/E, EAN, JAN, CODE 39, CODE 93, CODE 128, UCC/EAN 128, Inter-Leaved 2/5
	Industrial 2/5, Matrix 2/5, NW-7, MSI, Postnet, Bookland
	2 D: QR Code, PDF417, Maxi Code, Data Matrix
Matrix Fonts	Internal Fonts: XU 5x9 (Alphanumeric, symbols) XS 17x17 (Alphanumeric, symbols)
	XM 24x24 (Alphanumeric, symbols) XB 48x48 (Alphanumeric, symbols)
	XL 48x48 (Alphanumeric, symbols)
	OCR-A (15x22/ 203dpi, 22x33/ 305dpi, 44x66/ 609dpi) (Alphanumeric, symbols)
	OCR-B (20x24/ 203dpi, 30x36/ 305dpi, 60x72/ 609dpi) (Alphanumeric, symbols)
Scalable Fonts	Outline Font : Alphanumeric, symbols
	Rasterizer Font : CG Times (Alphanumeric, symbols), CG Triumvirate (Alphanumeric, symbols)
	Character Rotation : 0°, 90°, 180°, 270° rotation in each data
	Character Expansion : Vertical 1 ~ 12 times, Horizontal 1 ~ 12 times, L1 ~ L12 for barcode
	Useful Features : Status Report, Graphics (SATO Hex/Binary, bmp file or pcx file), Sequential Numbering, Form Overlay Store, Customized Design Character, Font Decoration, Reverse Image, Line Print, Hex Dump Print, Format Store
Functions	Outline, Outline Variation, Label Skip, Zero Slash Switchover
	Self-Diagnosis Check : Head Check, Paper End Detection, Head Open Detection
	Memory Card Error Detection, Test Print
	Operational Panel : LCD: 16x 2 line Alphanumeric (with backlight) Switch: LINE, FEED
	LED: ERROR, POWER, ONLINE DIP Switch: 2 sets
Graphic Support	VR Adjustments : VR: PRINT, OFFSET, PITCH
	Print Position Adjustments, Cutting/Dispensing/ Tear OFF Position Adjustment, Print Darkness Adjustment
	SATO Hex/Binary BMP or PCX Format
External Connectors	Parallel: 36-pin Amp Serial: DB-25 Ext (Accy): 14-pin Amp
Dimension	W265mm x D435mm x H335mm (W10.4" x D17.1" x H13.2")
Weight	18.5kg (40.7 lb.)
Power Requirements	110 - 115V (+/-10%), 220V (+/-10%), 50/60 Hz (+/-1%) Idle: 24VA/16W Operation: 190VA/130W
Environment	Operational: 5 ~ 40°C (41 ~ 104°F) non-condensing, 30 - 80%
	Storage: -5 ~ 60°C (23 ~ 140°F) non-condensing, 30 - 90%
Regulatory Approvals	FCC Class A, U/L, TUV, CE, CSA, CCC
Options	Label Cutter, Label Dispenser, Rewinder, Calendar ROM, PCMCIA Add-On Memory
	4MB Optional Memory PCB, Serial Bus/Ethernet 10/100 Base T/Coax/Twinax Interface

Regional Headquarters

SATO Asia Pacific Pte. Ltd.

438A Alexandra Road #05-01/04
Alexandra Technopark,
Singapore 119967

Tel : (65) 6271 5300
Fax : (65) 6273 6011
Email : sales@satoasiapacific.com
Website : www.satoworldwide.com

Other SATO Offices in Asia Pacific

- Kuala Lumpur, Malaysia
- Bangkok, Thailand
- Shanghai, China
- Shenzhen, China
- Auckland, New Zealand
- Melbourne, Australia
- New Delhi, India